



EIE

Constant Low Temperature Bath

EIE-CT-101

Constant Low Temperature Bath



- Temperature accuracy $\pm 0.1^{\circ}\text{C}$
- PLC automatic precise temperature control, real time temperature curve, high & low temperature warning
- High precision temperature sensor to ensure the data accuracy
- 9 individual bathes convenient for holding more samples
- Cooling time within 10 min



EIE

Constant Low Temperature Bath

EIE-CT-101

Product Introduction

EIE-CT-101 Constant Low Temperature Bath equipped with high precision temperature sensor and controlled by advanced temperature control system, can precisely control the temperature. By virtue of high efficient cooling module, it can cool down quickly. Water level alarm can automatically remind to fill the coolant when the level is low. It has nine bathes to facilitate the multiple samples test.

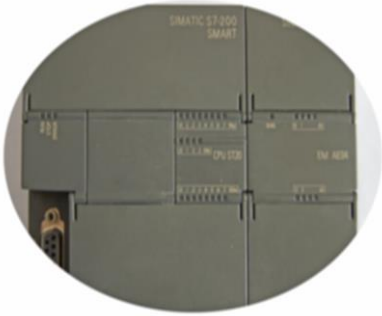




EIE

Constant Low Temperature Bath EIE-CT-101

1. PLC Temperature Control System,
accurate and reliable



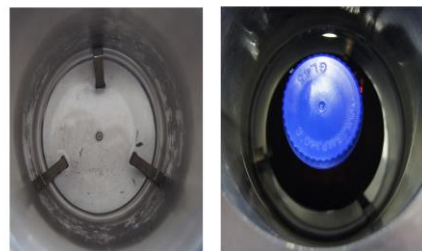
2. Control Temperature within $\pm 0.1^{\circ}\text{C}$



3. High precision temperature sensor



4. Built-in sample bottle fixture,
precisely and easily place the bottle



SPECIFICATIONS

**EIE****Constant Low Temperature Bath
EIE-CT-101**

Application	
GB/T 5487-2015 Gasoline octane number testing method	
Features	
Capacity	simultaneously processing 9 1L-samples
Control Software	Automatically precisely control the temperature
Stirring	Magnetic stirrer
Bath	9 holes of 500ml or 1000ml different samples
Safety	
Alarm	Low water level warning
Specifications	
Heating Power	1200 W
Bath Volume	38 L
Temperature Sensor	Pt100
Temperature Range	2 - 10°C, or self-defined
Temperature Accuracy	±0.1°C
Bath	9 positions of 500ml or 1000ml different sample bottle
Sample Cooling Time	< 10 min
Operation	
Voltage	AC 110 - 230V +/-10% 50-60 Hz
Input Power	1200 W
Operating Environment	
Ambient Temperature	5°C to 35°C
Storage Temperature	-10°C to 55°C
Relative Humidity	not more that 80% at 35°C
Working Place	Indoor
Product Size	
Dimensions (mm)	320W x 450D x 500H
Weight (Kg)	97.5