



EIE

REID Saturated Vapor Pressure Tester

EIE-RVP-2

REID Saturated Vapor Pressure Tester



- Wirelessly transmitting data to control station
- High precision pressure sensor
- 7" color touch screen
- One button run
- PID temperature control method
- ASTM D323, D4953, ISO3007, GB/T 8017



EIE

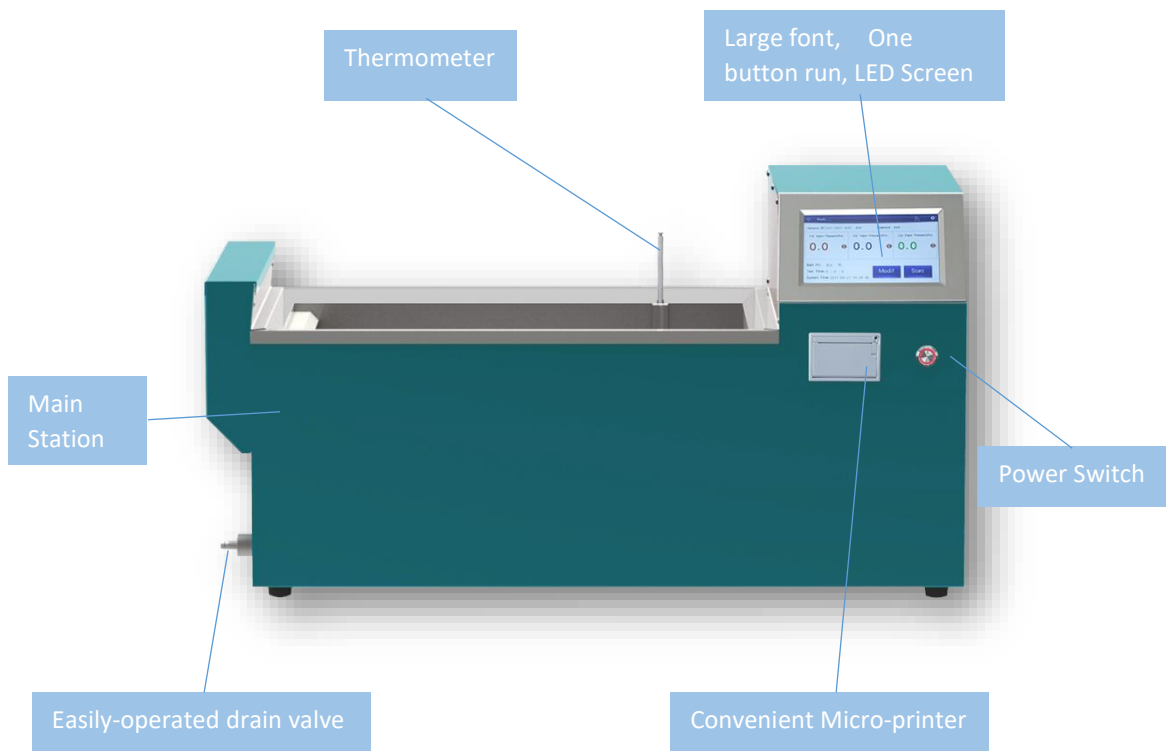
REID Saturated Vapor Pressure Tester

EIE-RVP-2

Product Introduction

EIE-RVP-2 REID Saturated Vapor Pressure Tester is based on ASTM D323 (Reid method) and GB/T 8017-2012. It offers satisfied precision and be used widely in petroleum, transportation and research department.

Unique wireless transmission simplifies the procedure, also avoids the pressure inconstancy resulting from the blocking due to the hose twining. It realizes that the bomb rotate in one direction, hence reduces the complexity of the rotary driving system and increases the instrument life and reliability. One-button run completing measurement, determination, record and print.



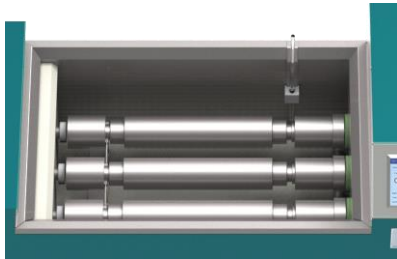


EIE

REID Saturated Vapor Pressure Tester

EIE-RVP-2

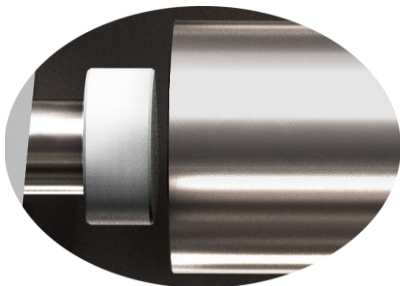
Three measuring units, option to choose one of three units



Unique sealed integrated test bomb, no pipe and connectors, enclosed one-piece pressure detection, no leakage, almost zero failure rate



Unique advanced wireless data transmission, test bomb can rotate in one direction all the time, rotary system needs no maintenance which extends the life



Friendly interface, one button run and easy operation and big LED color screen



**EIE**

REID Saturated Vapor Pressure Tester

EIE-RVP-2

SPECIFICATIONS

Standards	
ASTM D323, D4953, ISO 3007, GB/T 8017	
Features	
Application range	gasoline vapor pressure up to 250 KPa
Measuring temperature	37.8°C or 50°C
Temperature accuracy	+/-0.1°C
Temperature resolution	0.1°C
Bath temperature uniformity	+/- 0.05°C
Bath	Stainless steel
Measuring positions	2 or 3 or 4 positions
Measurement type	automatic determination of results, automatic display, automatic prompt
Display	7 in TFT high resolution screen
Data Capacity	Store more than 400 results
Printer	Built-in thermal printer with auto/manual option
Connectivity	To LIMS via RS232
Operation	
Voltage	AC 110 - 230V +/-10% 50-60 Hz
Power Usage	<1600W
Safety	
Bath	Anti leak design
Operating Environment	
Ambient Temperature	5 to 35°C
Storage Temperature	-10° C to 55°C
Relative Humidity	not more that 75%
Working Place	indoor
Product Size	
Dimensions (mm)	865Lx310Wx470H
Weight (Kg)	26