



EIE

Liquid Sampler
EIE-GAS-05

Liquid Sampler



- Advanced software can simultaneously run two analyzers doing the analysis automatically in proper sequence
- Ensure that the sample enters the instrument as a liquid
- Passivated and deactivated piping system prevents the adsorption of trace sample
- Inert gas blowing function, to ensure the purification of the injection system, to avoid the sample interference in the pipeline
- Processing sample cylinders of 3 or 6.



EIE

Liquid Sampler
EIE-GAS-05

Introduction

The unique self-developed software system can automatically run the sample sequence and start the gas chromatography, and also can save/select different analysis methods. One button run to reduce human operation and errors.

Has the capacity of working with different gas chromatography (please check with us) for convenience.

Ensure that the sample enters the instrument as a liquid.

Easy and quick connection with ¼" connector

Multi-line independent continuous analysis, no leak in connection, no sample interference or contamination

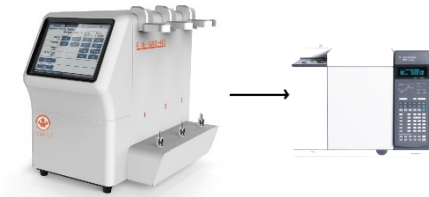
The steel cylinder has a built-in filter to purify the sample, which is replaceable.



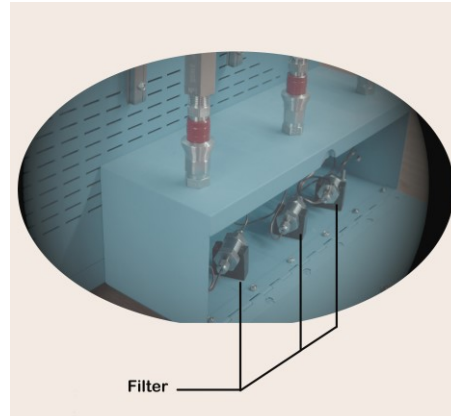
EIE

Liquid Sampler
EIE-GAS-05

Sampler can control the total sulfur analyzer to realize the continuous analysis



Filter system can effectively prevent the pipeline blockage or pollution



Automatically running, no manual operation



SilcoTek coated piping system prevents the adsorption of trace sample



Available Models

Product Model	Processing Bag Number	System
EIE-GAS-05A	3	Single system controls one instrument
EIE-GAS-05B	6	Single system controls one instrument
EIE-GAS-05C	6	Double systems control two instruments

**EIE**Liquid Sampler
EIE-GAS-05

SPECIFICATIONS

Standards	
Manufactured in accordance with IEC 61010	
Features	
Control Software	Automatically run the sample sequence
Prevention absorption	Passivated and deactivated components eliminating the sample interference
Flexibility	Can work with multiple different gas chromatography
Quick Connector	1/4" adapter
Processing Cylinder Number	cylinders and bags
Exit Flow Rate	30ml/min, back pressure around 0.1 to 0.3 MPa
Vaporization	Heated to 135°C
Sample Blowing	Blowing sample for 30s before sampling
Filter	Built-in filter to ensure pure gas inlet
Operation	
Voltage	AC 110 - 230V +/-10% 50-60 Hz
Sampling Method	Electromagnetic valve; diaphragm vacuum pump
Sampling System Clean	N ₂ Blown, user-defined times
Analysis Method	Can save or select in software
Power Usage	240W
Safety	
Leak Prevention	Swagelok HOKE components to reduce leak probability
Operating Environment	
Ambient Temperature	5°C to 35°C
Storage Temperature	-10° C to 55°C
Relative Humidity	not more than 80% at 35°C
Working Place	indoor
Product Size	
Dimensions (mm)	320W x 450D x 500H
Weight (Kg)	27.5